



BISCAYNE MODERN | 712 sq ft*

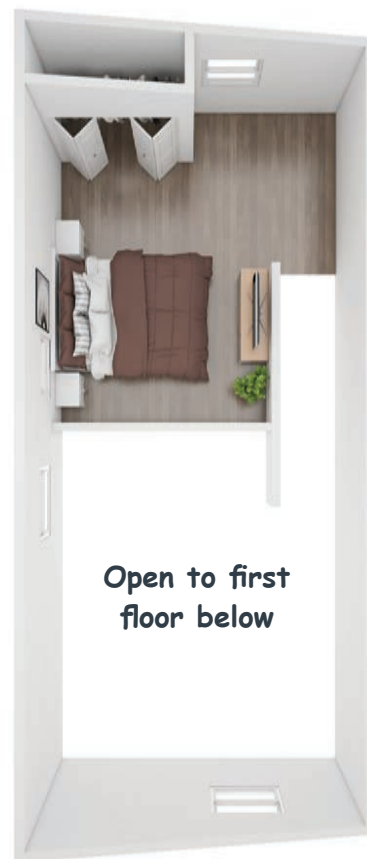
Vaulted living area • 1 bedroom • 1 bathroom • *40 sq ft covered porch

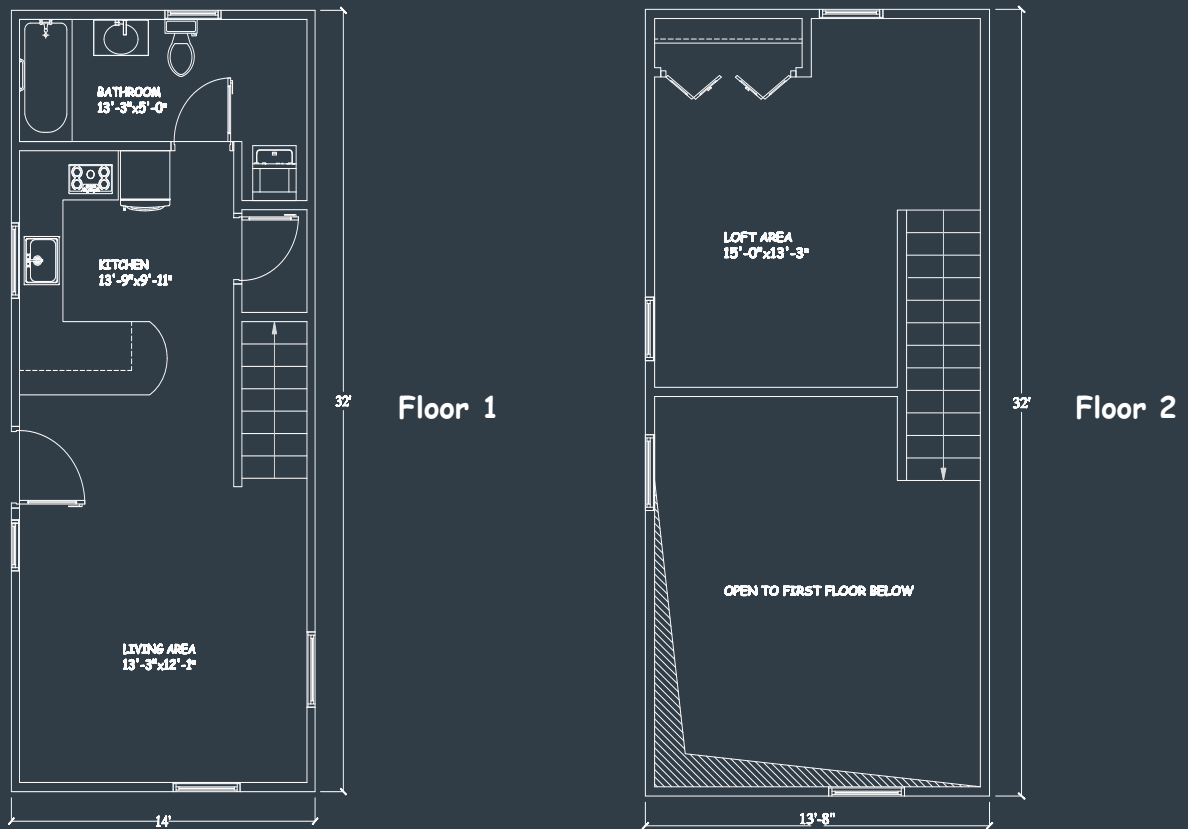
Floor 1



Open to first
floor below

Floor 2





About This Kabin:

- 712 SF - Includes 40 SF covered porch
- 2 Story
- 1 Common Room + Vaulted living area to maximize space
- 1 Bedroom with loft area open to room below
- 1 Bathroom
- Adjustable Interior Layouts
- Semi customizable options including flexible window and door locations
- Constructed to Built Green's 4-star standards

Comprehensive Turn-Key Services:

- Site Survey
- Soils Reports
- Permitting
- All Utility connections (typically, including a new dedicated electrical meter)
- Site Preparation and restoration (additional landscaping extra)
- Foundation, installation & unit construction
- Final finishes, including all paint & trim (Interior and Exterior)
- Basic appliance package, including install and hook-up (washer/dryer and dishwasher sold separately)
- Final clean, debris haul-away and disposal following all Built Green standards