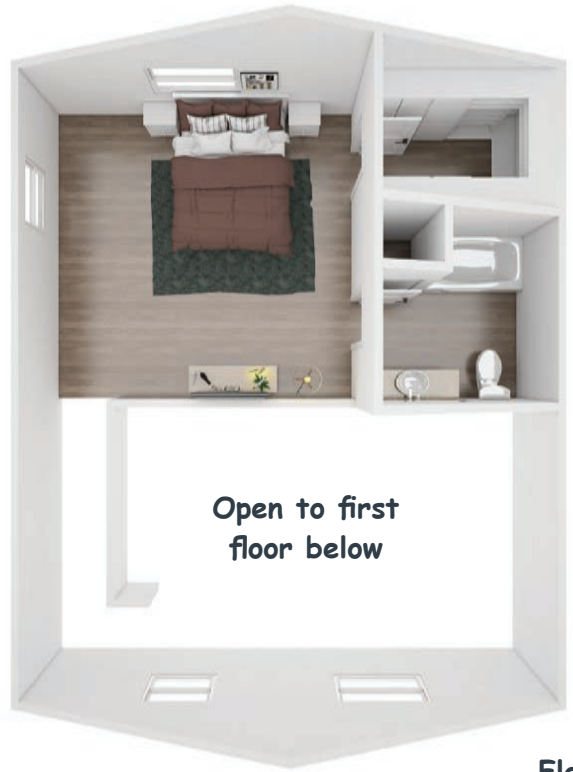




CAPITOL TRADITIONAL | 1,040 sq ft*

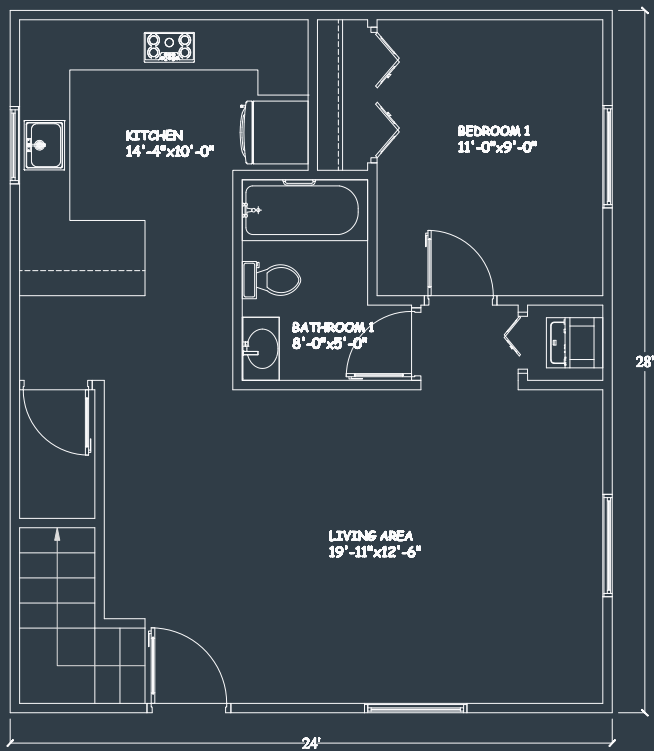
Vaulted living area • 2 bedroom • 2 bathroom • *40 sq ft covered porch

Floor 1

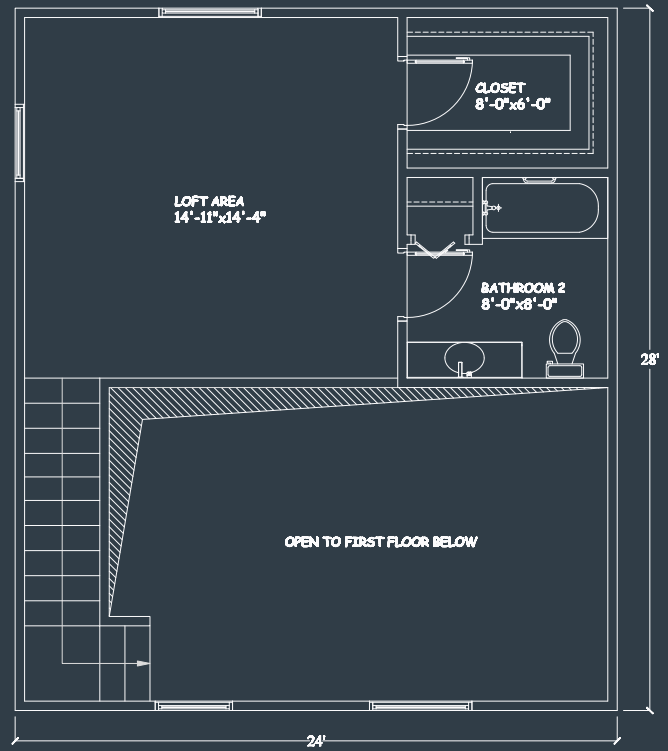


Open to first floor below

Floor 2



Floor 1



Floor 2

About This Kabin:

- 1,040 SF - Includes 40 SF covered porch
- 2 Story
- Living area with vaulted ceiling open to loft above to maximize space.
- 2 Bedrooms (2nd story bedroom features loft open to room below)
- 2 Bathrooms
- Semi customizable options including flexible window and door locations
- Constructed to Built Green's 4-star standards

Comprehensive Turn-Key Services:

- Site Survey
- Soils Reports
- Permitting
- All Utility connections (typically, including a new dedicated electrical meter)
- Site Preparation and restoration (additional landscaping extra)
- Foundation, installation & unit construction
- Final finishes, including all paint & trim (Interior and Exterior)
- Basic appliance package, including install and hook-up (washer/dryer and dishwasher sold separately)
- Final clean, debris haul-away and disposal following all Built Green standards